

## Convert a DOC file into the PDF format

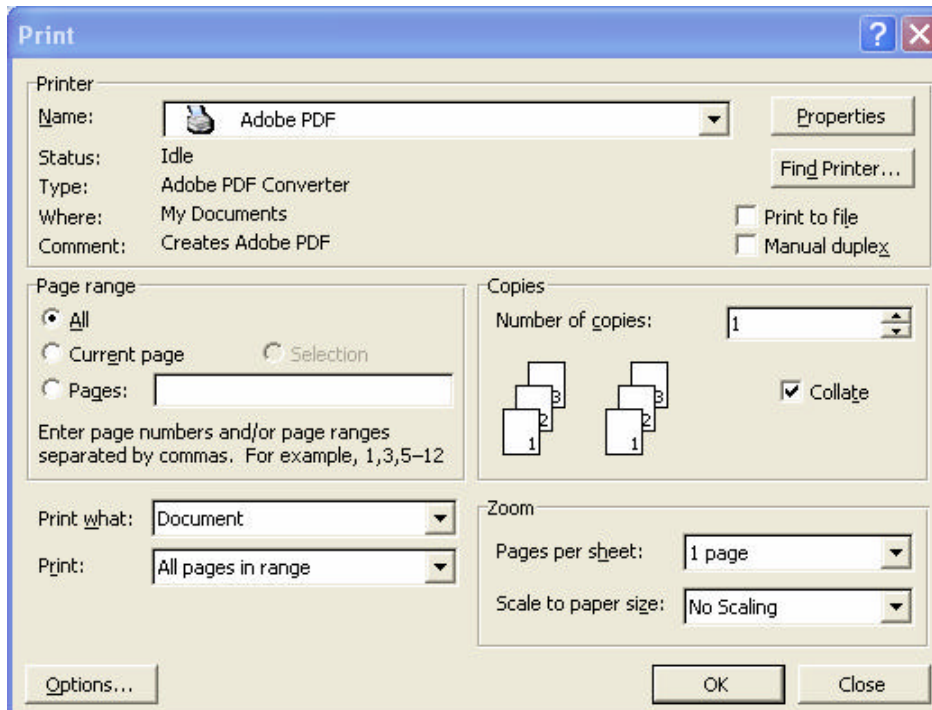
Note 1: The paper must strictly follow the template regulation of ETFA 2008.

Note 2: It is recommended that the file be compiled in English Windows system.

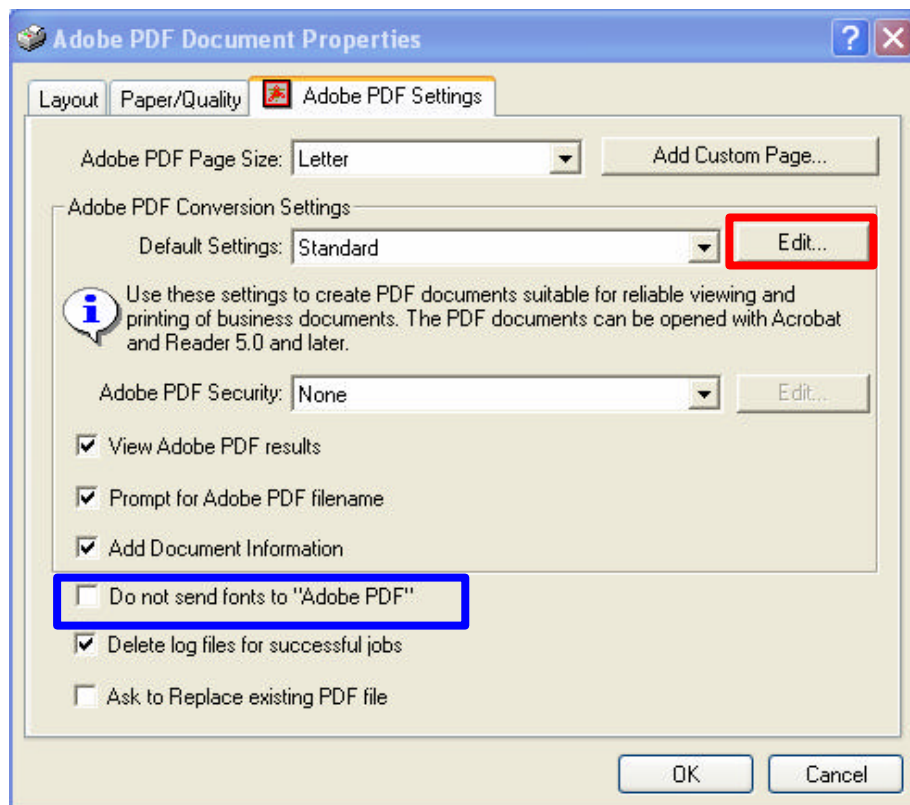
Note 3: For missing font or font encoding problems, do remember to embed all fonts into your file, especially for Asian characters.

Note 4: The following procedures cannot guarantee 100% success.

(1) Choose “Adobe PDF ” in the printer name box, and then select “Properties.”

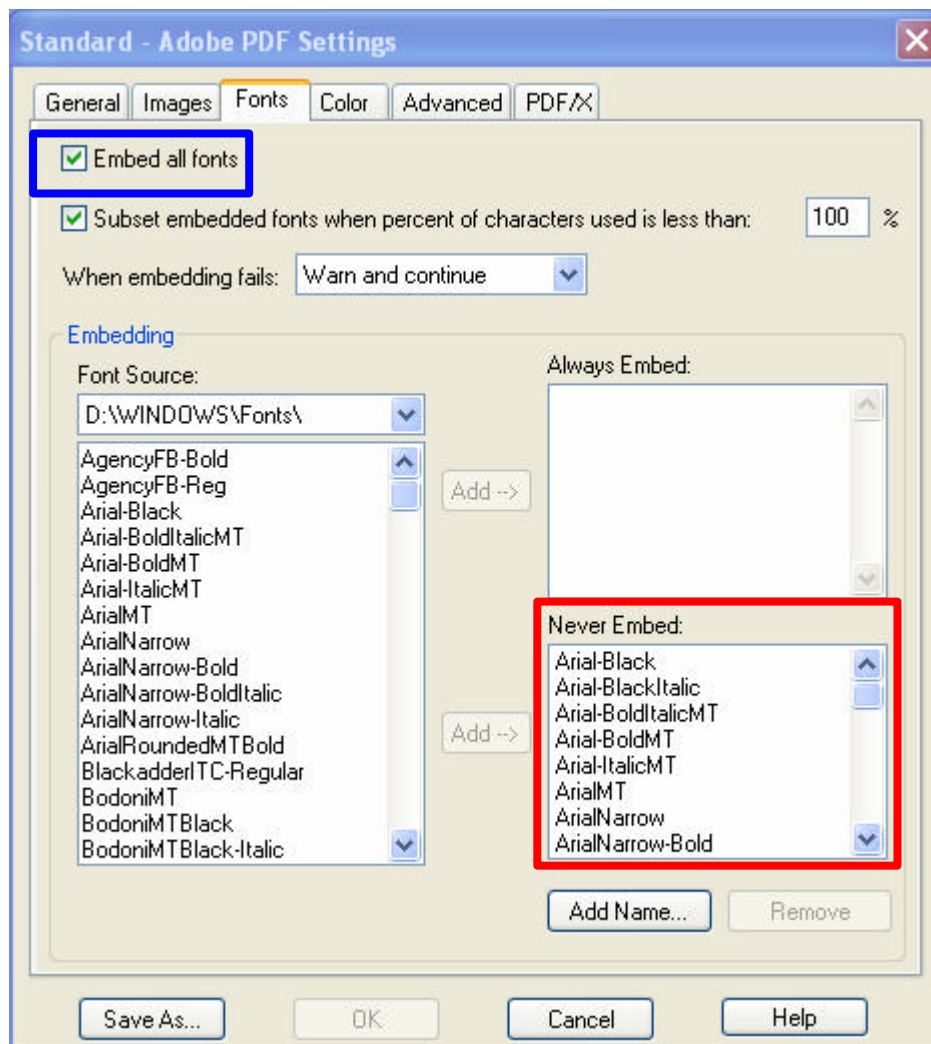


(2) Click “Edit”(marked in red).

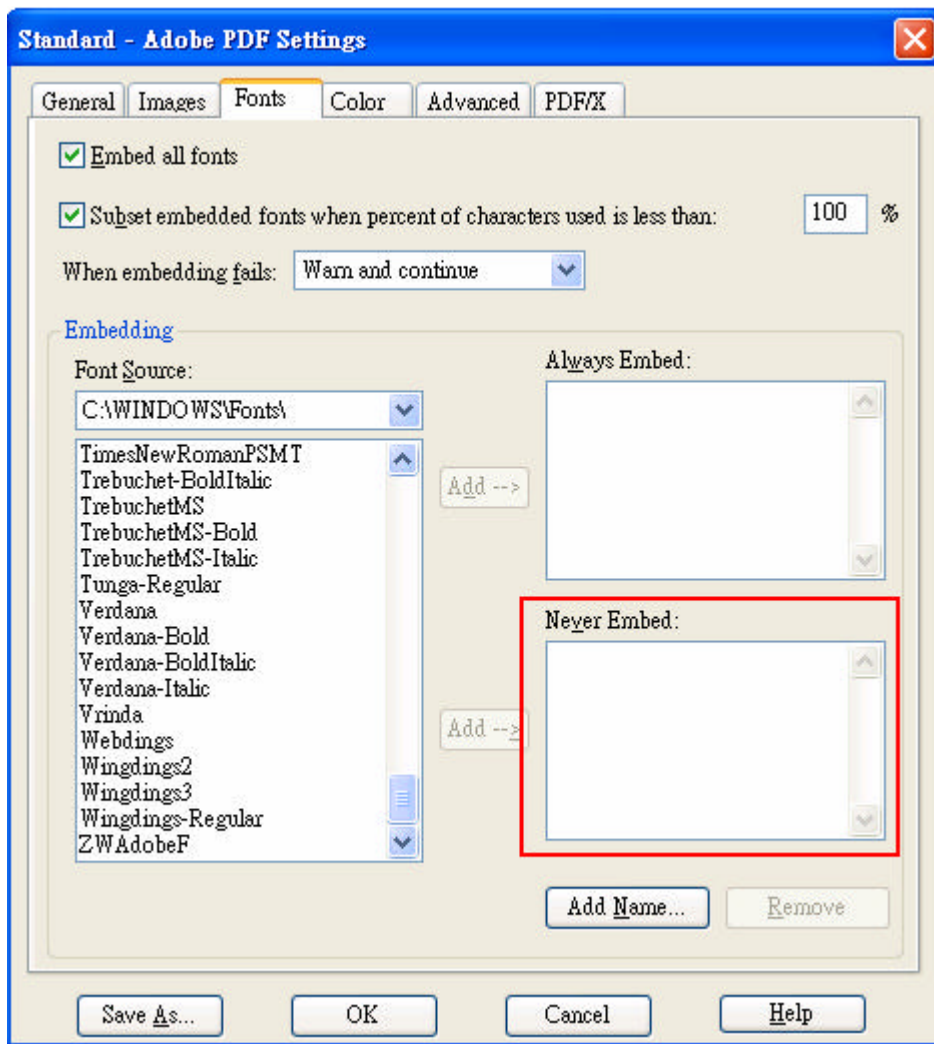


Don't click the button “Do not send fonts to “Adobe PDF”” (marked in blue).

(3) Click the button “Fonts”, and make sure to select “Embed all fonts”(marked in blue), and everything in the “Never Embed” box (marked in red).



( 4 )After removing everything in the “Never Embed” box (marked in red), press OK.



(5) Finally, in the resulting PDF file, select the “File-> Document Properties-> Font”. If there is an “Embedded Subset” attached to every font, the process is successful.

